



SORTING SOLUTIONS for different input-materials

E.C.E.X.A. - Environmental Concepts
Exchange Association

Strohberggasse 16,

1120 Wien, Austria

Tel: ++43 (0)664142 03 06

office@ecexa.at, www.ecexa.at

Mechanical waste treatment and sorting plant, Dresden/DE



Input:

Dry commercial and industrial waste, demolition and construction wastes

Capacity:

110,000 t/a in a 1-shift-operation

Scope:

Mechanical treatment of waste, in order to produce several qualities of calorific fractions and reduce the proportion for landfilling

Process:

Primary shredder, 2 drum screens, 2 auto-matic PVC-sorters, 2 ballistic separators, 2 wind-shifters, magnetic separators, eddy current separators, 3 secondary shredders, baler, 2 pelletizers, 2 truck loading stations, 2 hand sorting stations



Erection: 2003

Mechanical waste treatment and sorting plant, Dresden/DE



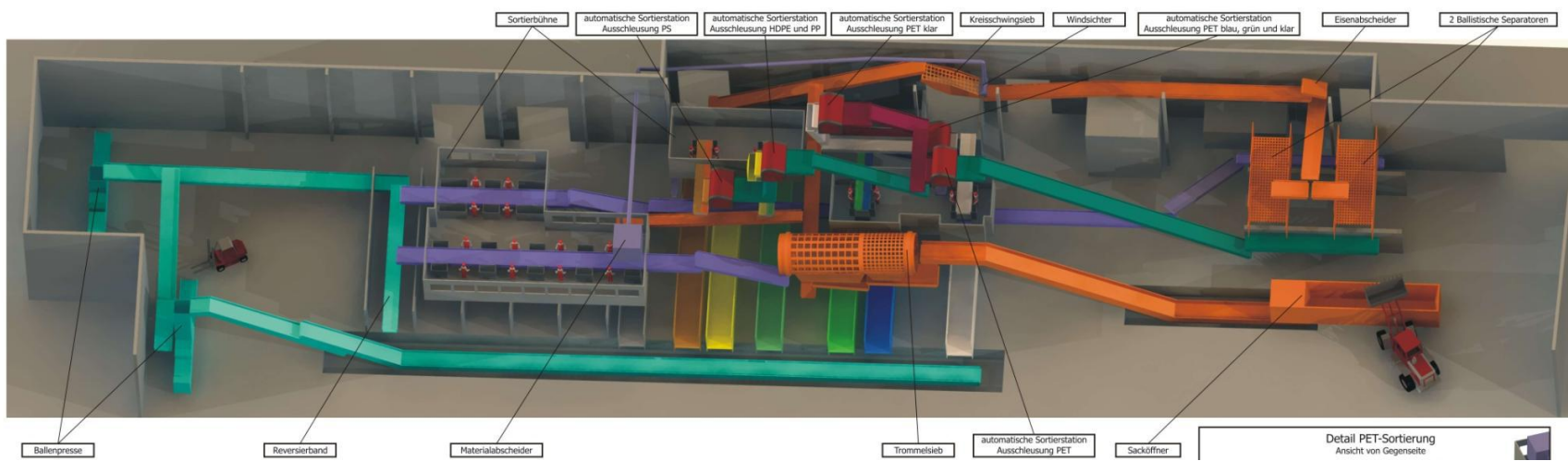
Mechanical waste treatment and sorting plant Graz/A

Input: Separately collected packaging waste, paper and dry commercial waste

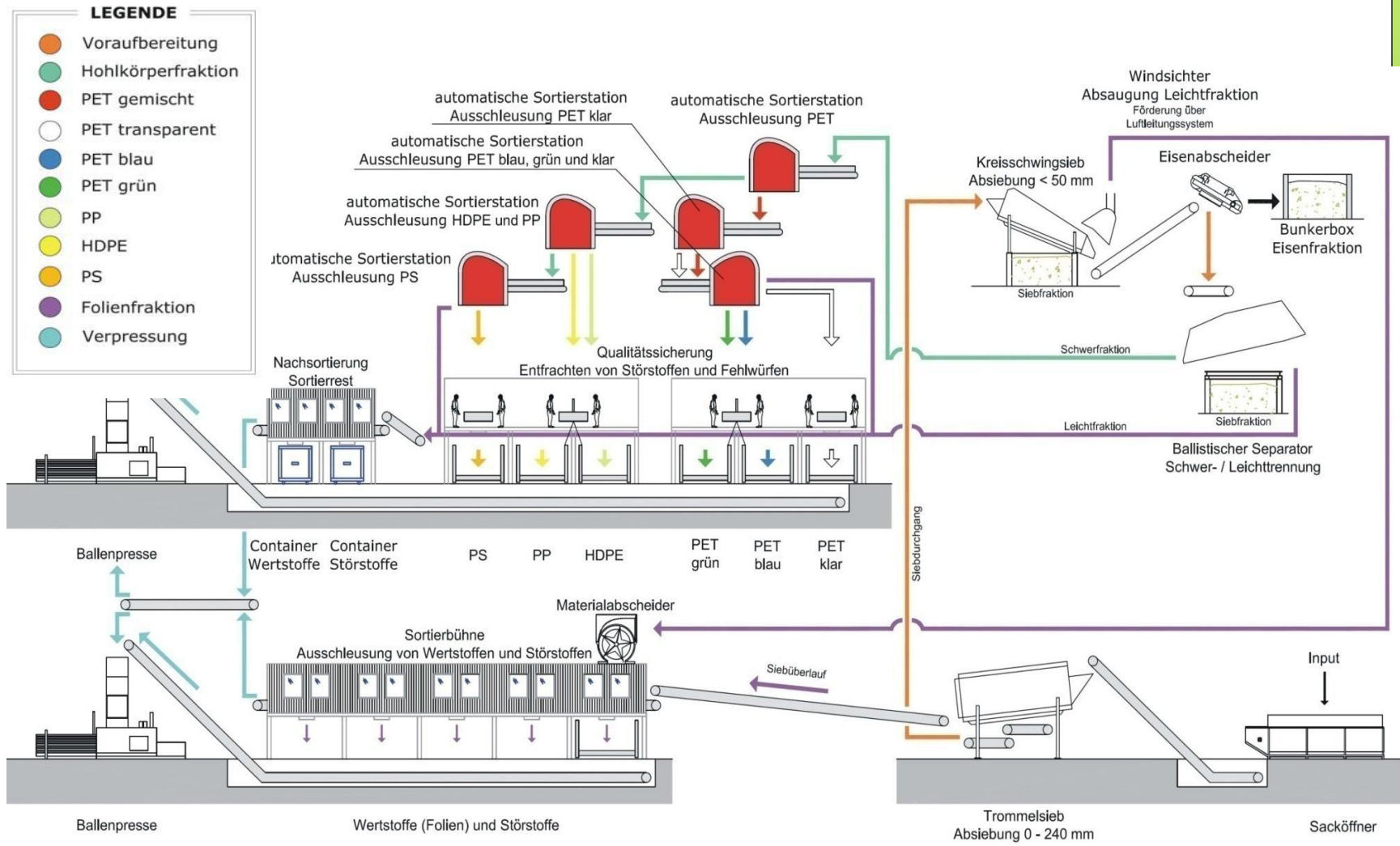
Capacity: 50,000 t/a

Scope: Sorting of waste to achieve maximum possible purity in sorted output, obtain fractions for recycling like PET, PS, PP, HDPE, paper, cardboard sorting purity by delivering minimum reliability of 98%

Process: Bag-opener, drum screen, ballistic separators, vibrating screen, wind-shifter, magnetic separators, 5 infrared sorters, manuel sorting stations, balers



Mechanical waste treatment and sorting plant Graz/A



Mechanical waste treatment and sorting plant Graz/A



SRF-Treatment Schwedt a.d. Oder/DE

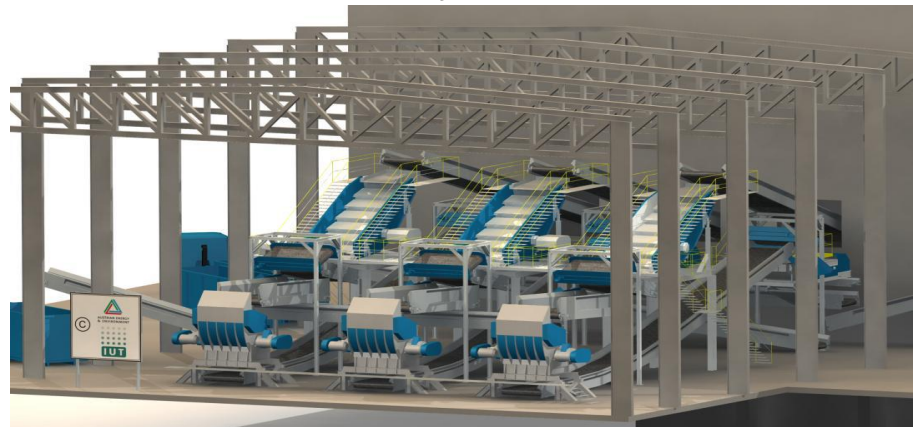
Input: High-calorific fractions from pre-treatment plants, rejects from nearby paper mill

Capacity: 250,000 t/a

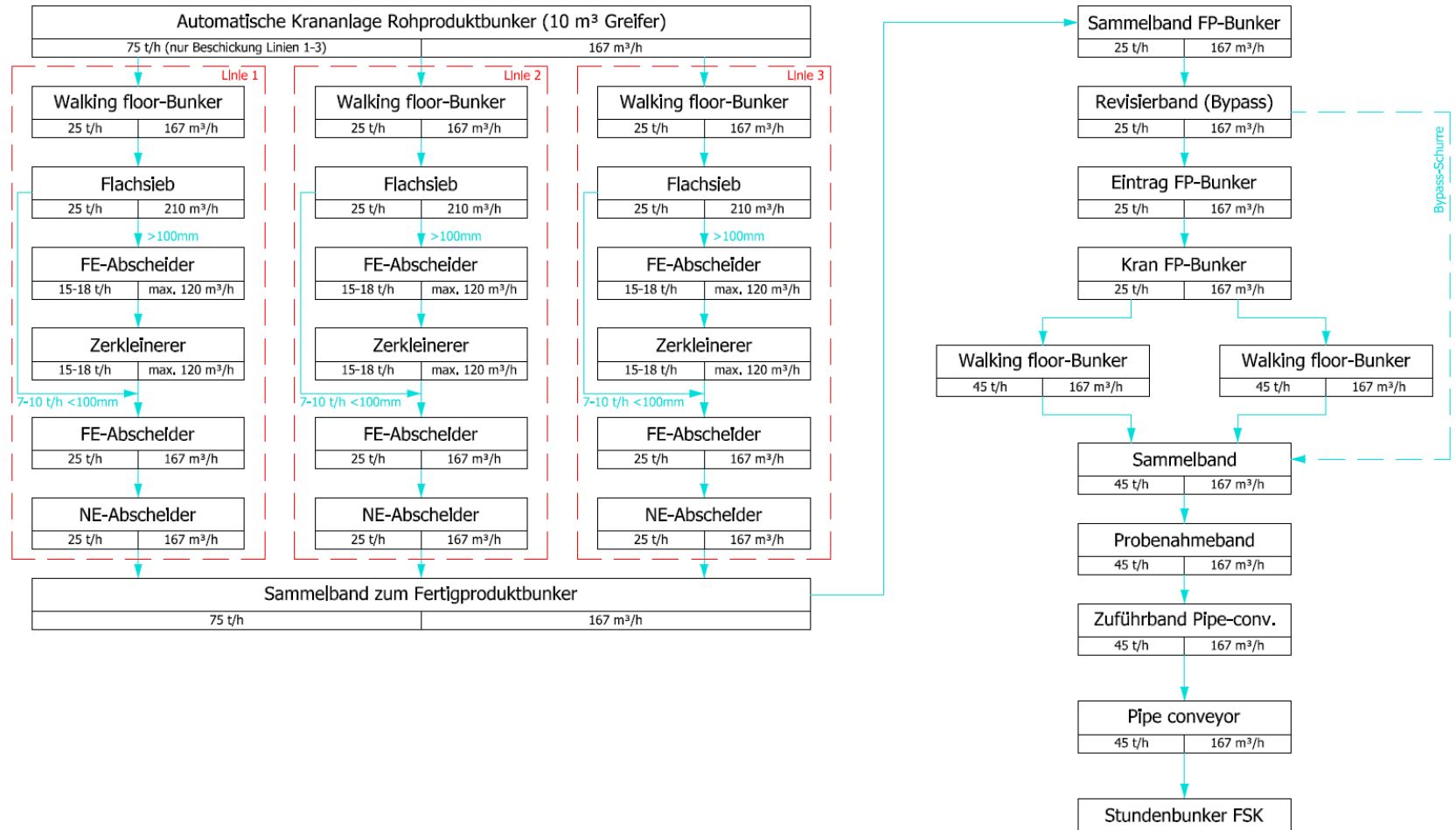
Scope: 3-line treatment plant for production of a combustible waste fraction and extraction of foreign parts including automatic crane systems for the input and output storage and direct material transport to the thermal use in a fluidized bed boiler.

Process: 2 automatic crane systems, 3 dosing units, 3 vibrating screens, 6 magnetic separators, 3 eddy current separators, 3 secondary shredders, automatic bunker filling system for the final product, 2 de-dusting systems, direct connection to the boiler via conventional conveyors and a 420m pipe-conveyor.

Erection: 2009



SRF-Treatment Schwedt a.d. Oder/DE



SRF-Treatment Schwedt a.d. Oder/DE



Waste management centre Pfaffenau, Vienna/A

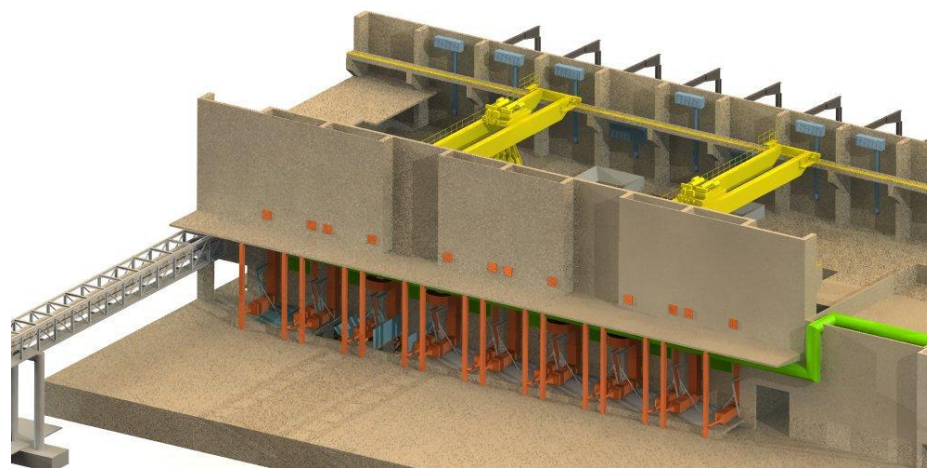
Input: Mixed solid waste (household and commercial) from Vienna, bulky waste

Capacity: max. 130 t/h

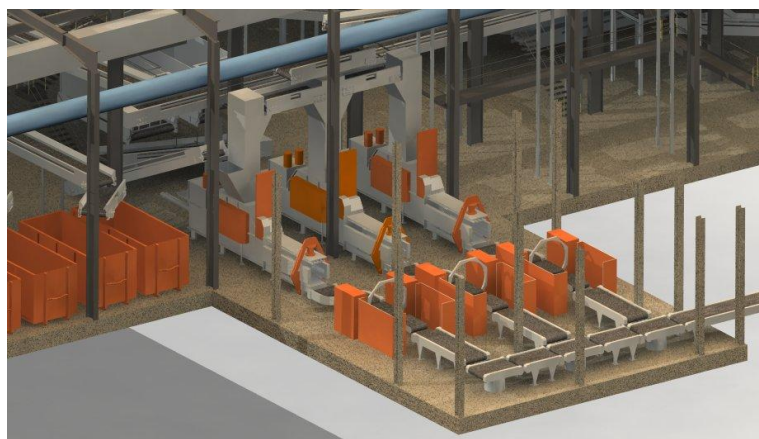
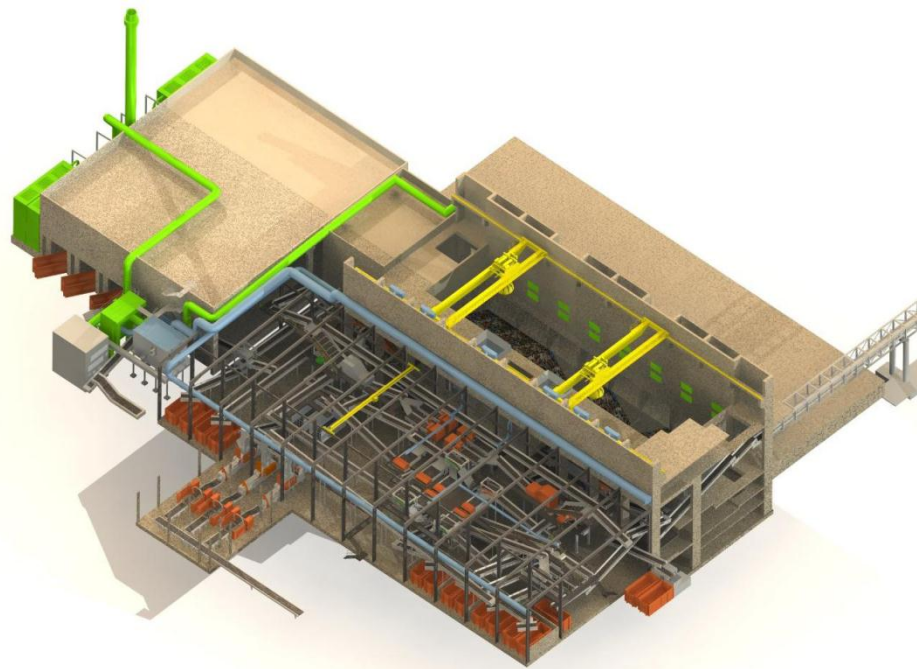
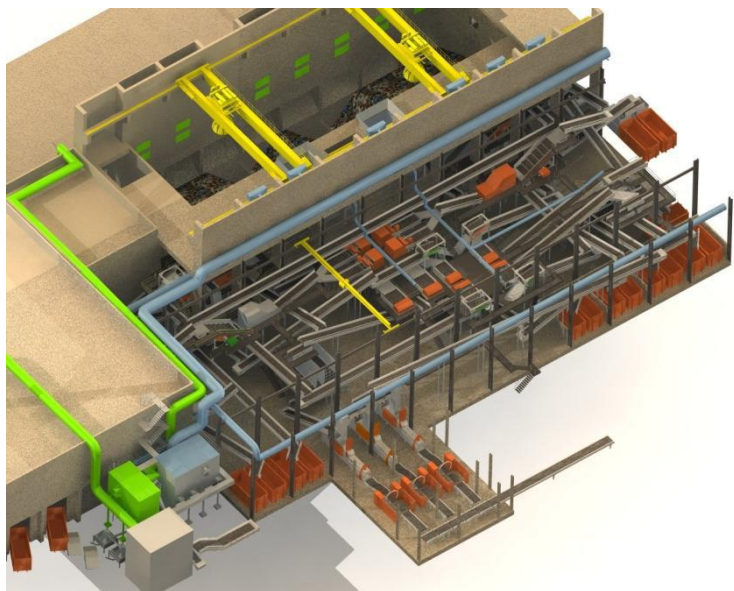
Scope: Design of a waste management centre as pre-treatment-plant (shredding, extraction of foreign parts, separation into different calorific fractions) in front of 2 different incineration plants and as backup solution for unforeseen shutdowns of all 4 incineration plants in Vienna with an intermediate storage for 50,000 t.

Process: Bunker cranes, 2 dosing units, 2 primary shredders, 4 vibrating screens, 7 magnetic separators, 6 eddy current separators, 4 automatic PVC-sorters, 4 wind-shifters, 3 balers, 3 bale wrappers, shredder for bulky waste, 2 de-dusting systems, biological treatment of the exhaust air with biofilters, direct connection to the incineration plant WSO4 via conveying systems

Erection: 2010 - 2011



Waste management centre Pfaffenau, Vienna/A





- **E.C.E.X.A.** - Environmental Concepts Exchange Association
- Strohberggasse 16,
- 1120 Wien, Austria
- Tel: ++43 (0)664142 03 06
- office@ecexa.at, www.ecexa.at